



2026 | COMPANY PRESENTATION

DISCLAIMER

This Investor Presentation (the "Report") has been prepared by DBA Group S.p.A. (the "Company") for informational purposes only. The information contained in this Report is subject to change without notice, and the Company makes no representation or warranty, express or implied, regarding the accuracy, completeness, or suitability of the information contained herein. The Company does not assume any obligation to update or revise the information contained in this Report, whether as a result of new information, future events, or otherwise. The information in this Report should not be considered as, and is not intended to be, investment advice or a recommendation to buy or sell any securities or make any investment decisions. This Report may contain forward-looking statements, which are based on the Company's current expectations, estimates, and projections. These statements are not guarantees of future performance and involve risks and uncertainties that are difficult to predict. Actual results may differ materially from those expressed or implied in these forward-looking statements. Investors should be aware that investment in securities involves risks and uncertainties and should carefully consider their investment objectives, risk tolerance, and financial situation before making any investment decisions. Past performance of the Company or its securities is not indicative of future results. The information in this Report may include information obtained from third-party sources, and the Company does not endorse or independently verify the accuracy or completeness of such information. Any reliance on third-party information is at the investor's own risk. This Report is not an offer to sell or a solicitation of an offer to buy any securities and is not intended for distribution to, or use by, any person or entity in any jurisdiction or country where such distribution or use would be contrary to local law or regulation. Investors are encouraged to seek independent financial and legal advice before making any investment decisions based on the information contained in this Report. By accessing or reviewing this Report, you acknowledge and agree to the terms of this disclaimer and release the Company from any liability or responsibility for any direct or consequential loss or damage arising from the use of this Report or its contents.

AGENDA

1. COMPANY OVERVIEW

2. FINANCIAL HIGHLIGHTS

3. APPENDIX

1. COMPANY OVERVIEW

DBA GROUP

DBA Group is an independent holding (group of companies) specialized in **Consultancy, Architecture, Engineering and Project Management services and ICT solutions** focused on lifecycle management for buildings and infrastructures

~116

€M
SERVICES AND
PRODUCTS

500+

ACTIVE
CLIENTS

1100+

SKILLED
PROFESSIONALS

9

COUNTRIES

34

YEARS OF
EXPERIENCE

Engineering, Consulting and ICT Solutions

MANIFESTO OF DBA GROUP PURPOSES and VALUES

Purpose

We inhabit the world of consulting, architecture, engineering and ICT with passion, audacity and vision. We want to be **enablers of innovation** and **ecological transition, promoters and facilitators of change**, working together with customers and partners for a better future for all. We embrace the spirit of **pioneers**, of those who dare to leave the beaten track and **open up new paths**.



AUDACITY

We sit on solid foundations while looking to explore ever-new horizons. With the courage of pioneers and a touch of audacity.



SUSTAINABILITY

Our compass for today and the lens through which we interpret tomorrow.



MULTI-DISCIPLINARITY

A key factor in our approach, because collaboration in diversity multiplies value.



RESEARCH

We innovate and enable innovation, embracing challenges with enthusiasm and expertise.



EXCELLENCE

We strive for it in everything we do, with creativity, care and «made in Italy» flexibility.



UNIQUENESS

We recognise the personal and professional value of each individual, supporting their talent, training and growth.

GEOGRAPHICAL PRESENCE

17 offices in Italy
10 offices abroad



DBA OFFICES

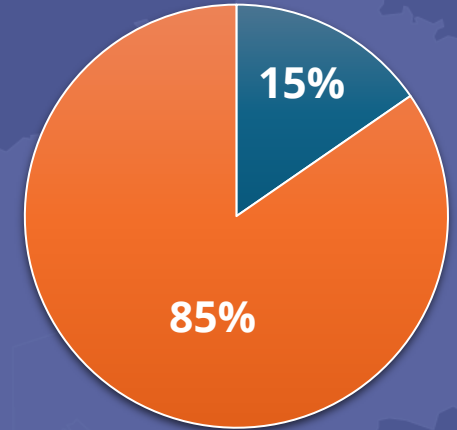
Italy, Albania, Azerbaijan, Bosnia and Herzegovina, Croatia, Montenegro, Serbia, Slovenia, Spain

PROJECT AREAS

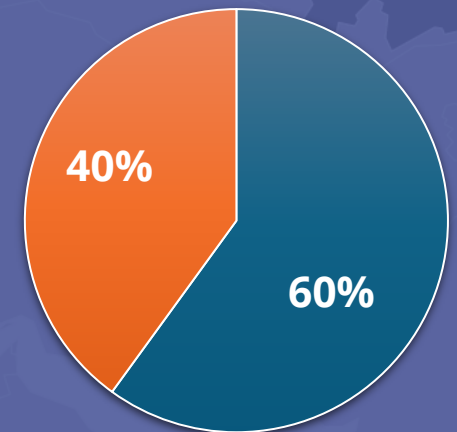
Angola, Bulgaria, Denmark, Egypt, Estonia, Georgia, Germany, Greece, Jordan, Kirghizistan, KSA, Liberia, Mexico, Morocco, Portugal, Romania, Russia, Switzerland, Tagikistan, Thailand, Turkey, UK, Venezuela

Value of Production FY2024

115,8 €M

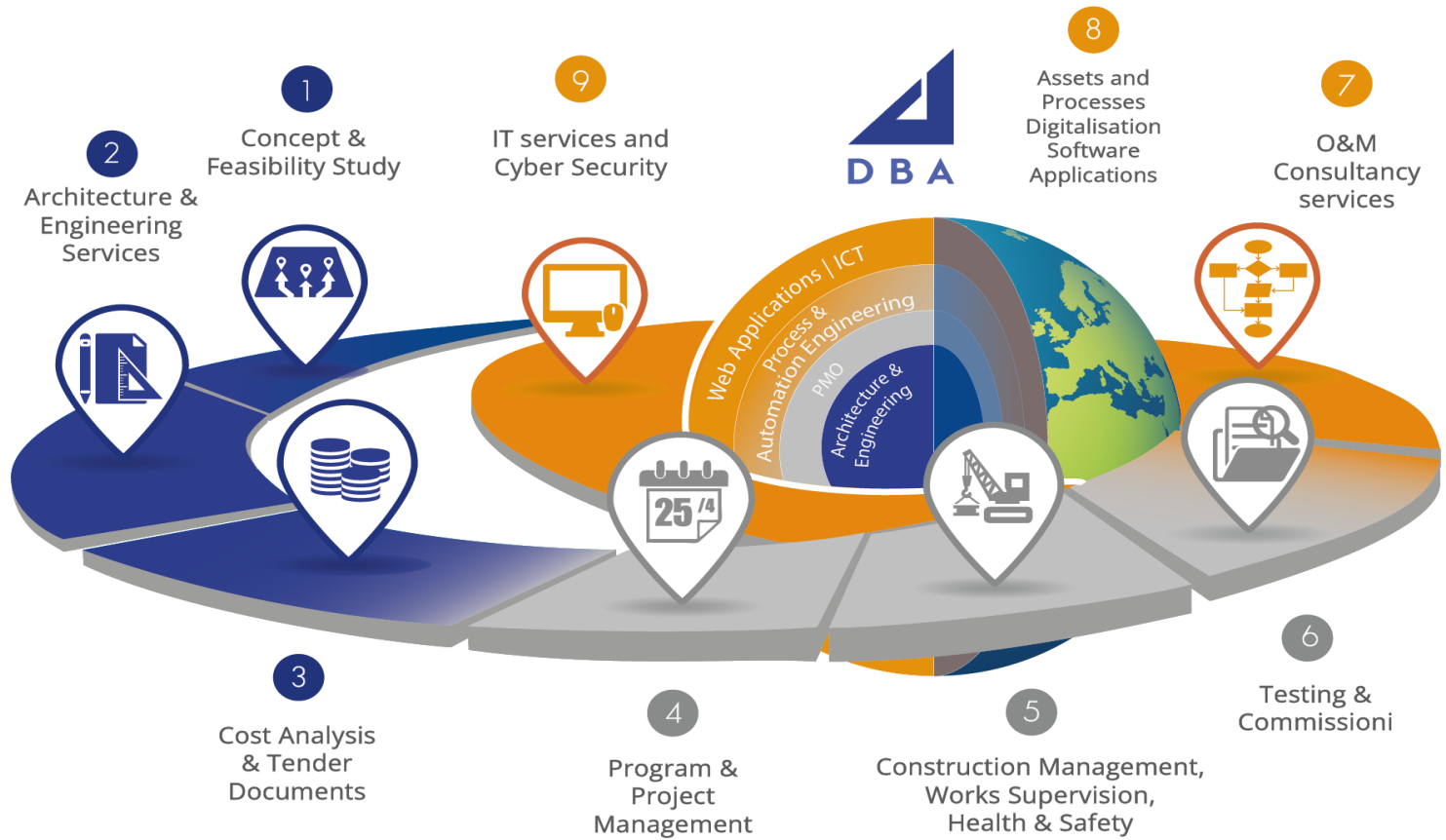


□ PUBLIC □ PRIVATE



□ ITALY □ ABROAD

SERVICE PROVIDED



ARCHITECTURE & ENGINEERING

Professional services from conception to maintenance of mission-critical works and infrastructure

PROJECT MANAGEMENT OFFICE

Management of complex projects, integrating process engineering and digital systems to ensure compliance with time and cost constraints

A.E.P.M.



CONSULTING

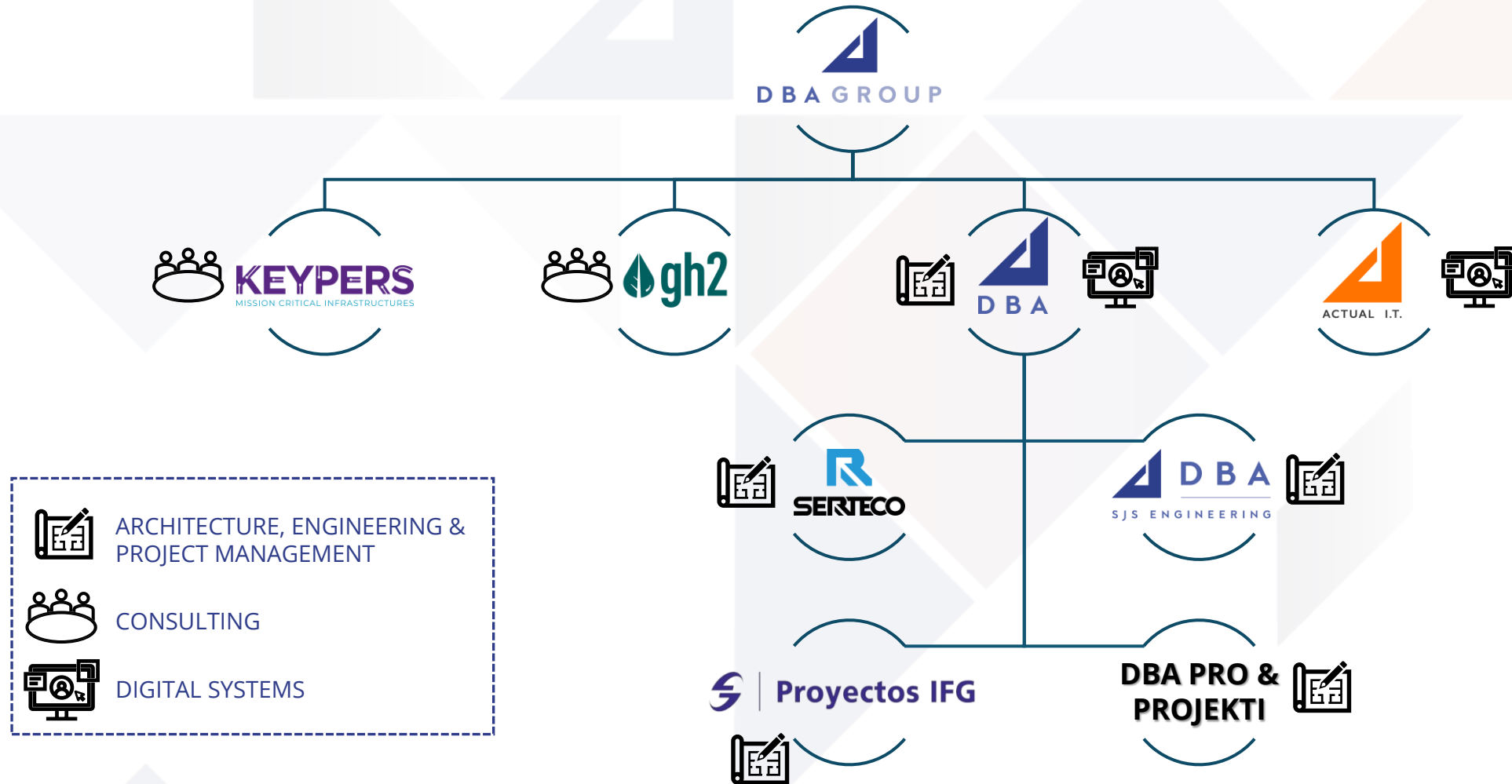
Strategic advisory focused on the analysis, enhancement, optimization and efficiency improvement of third-party assets, in full compliance with applicable regulations



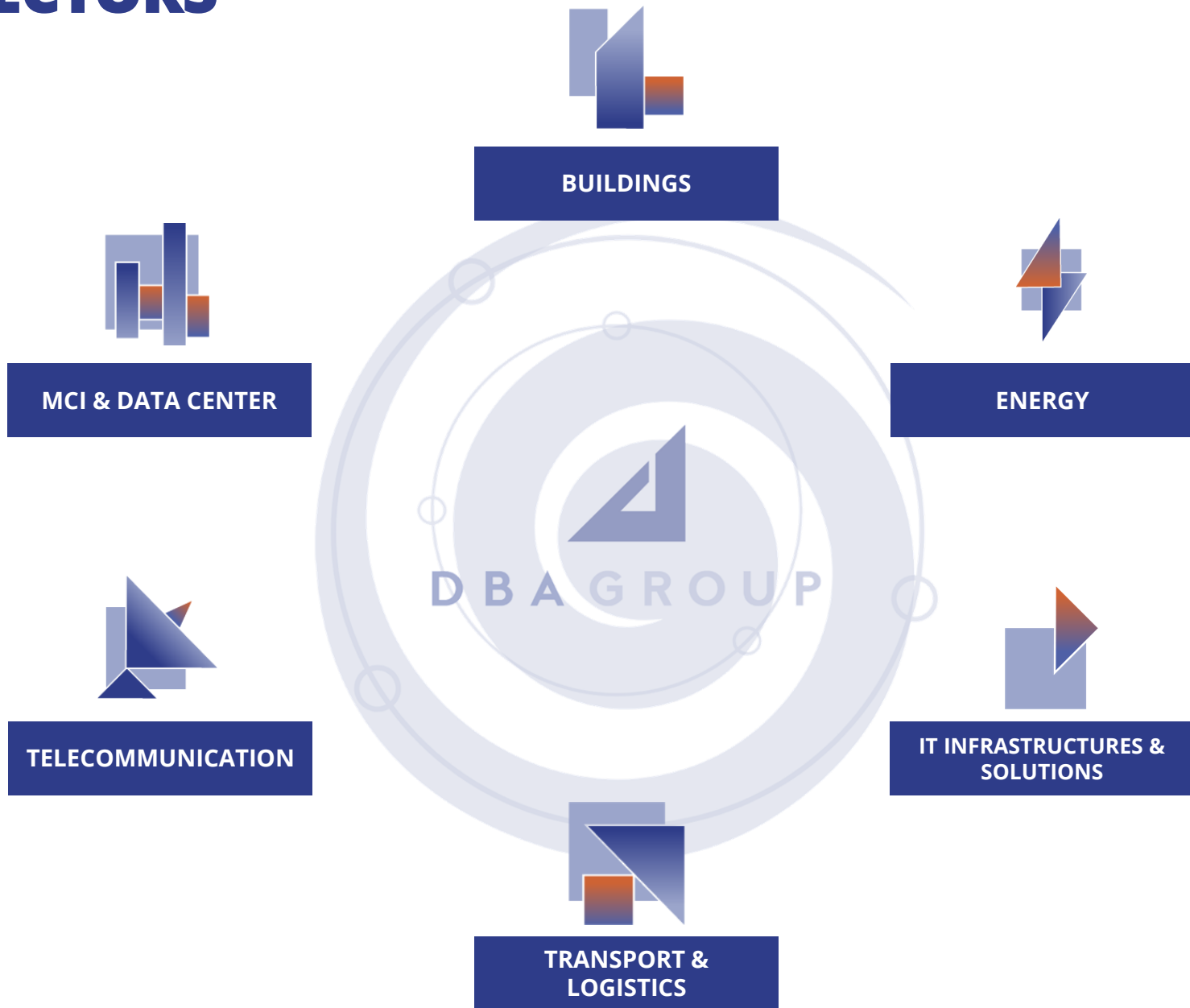
DIGITAL SYSTEMS

Analysis, optimization, and development of software platforms for Infrastructure Lifecycle Management

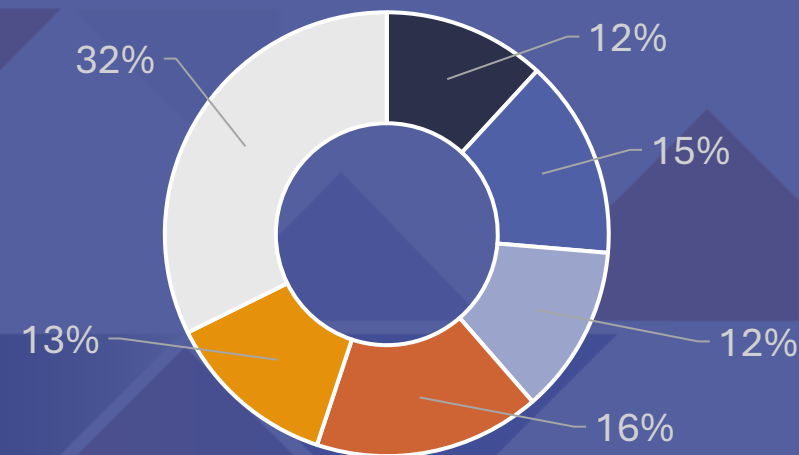
A SIMPLIFIED GROUP STRUCTURE



SECTORS



SECTORS' CONTRIBUTION



FY2024

MCI & DATA CENTER	13,7 €M
BUILDINGS (Pharma & Healthcare, Real Estate & Retail, Industrial)	16,8 €M
ENERGY	14,2 €M
TELECOMMUNICATION	19,1 €M
TRANSPORT & LOGISTICS	14,6 €M
IT INFRASTRUCTURES & SOLUTIONS	37,4 €M

TOTAL V. o. P.

115,8 €M

OVERVIEW OF THE ITALIAN ENGINEERING MARKET

MARKET CHARACTERISTICS

- **Wide service perimeter**
Firms offer a broad spectrum: from design and consulting to full project delivery
- **Blended disciplines**
Architecture and engineering are deeply intertwined, making clear segmentation challenging
- **Group-backed leaders**
Top-ranked firms typically belong to large groups
- **Pure engineering focus**
Companies primarily engaged in contracting are excluded from ranking

5 €B
TOTAL MARKET VALUE

DBA POSITIONING

7th
DOMESTIC REVENUES

9th
OVERALL RANKING*

* Out of 200 top engineering companies in Italy

TOP-NOTCH CLIENT BASE

MCI & DATACENTER



BUILDINGS



ENERGY



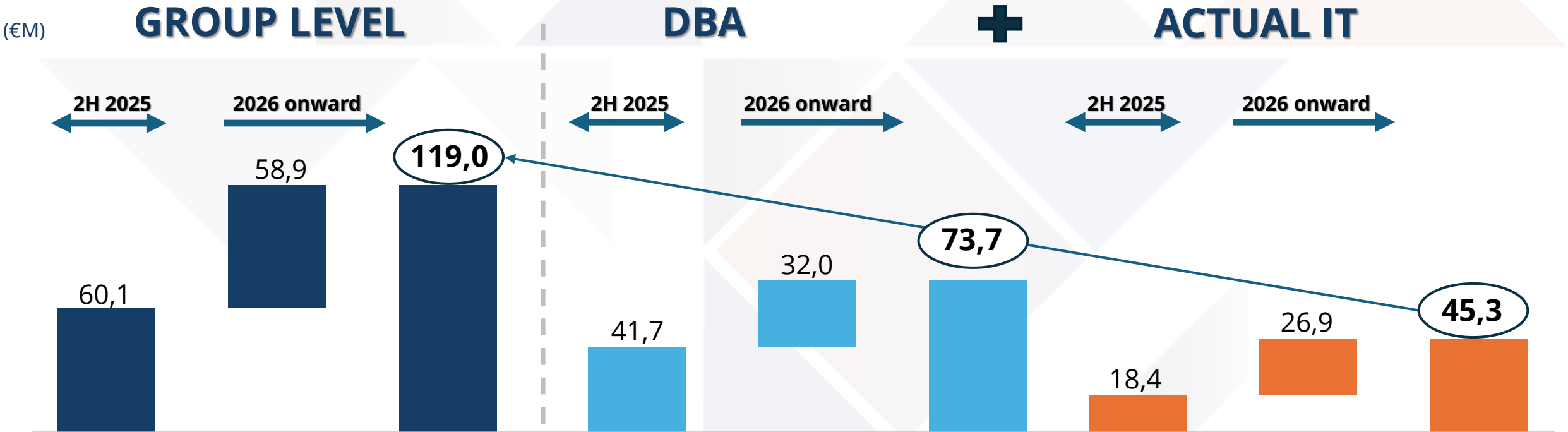
TELECOMMUNICATION



TRANSPORT & LOGISTICS



BACKLOG VISIBILITY AS OF 30/06/2025

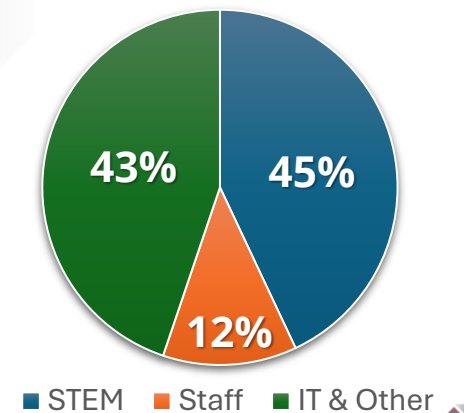
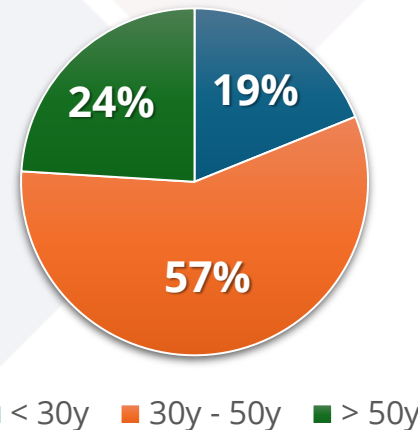
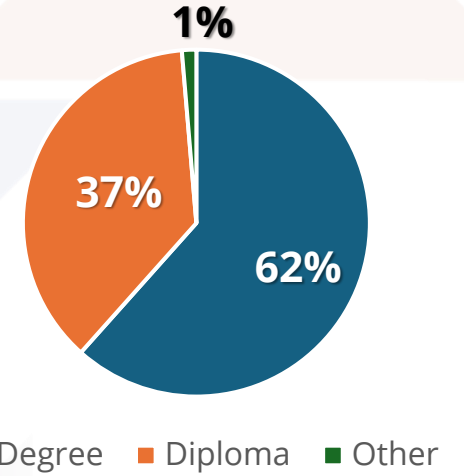
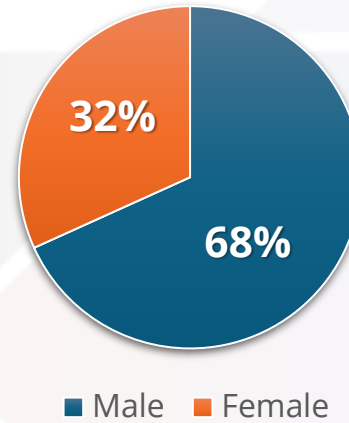


Backlog in 2025 to cover ~ 85% of VoP expected in 2H 2025

PEOPLE IN DBA GROUP: HEADCOUNT AS OF 31/12/2024



MAIN INDICATORS



2. FINANCIAL OVERVIEW

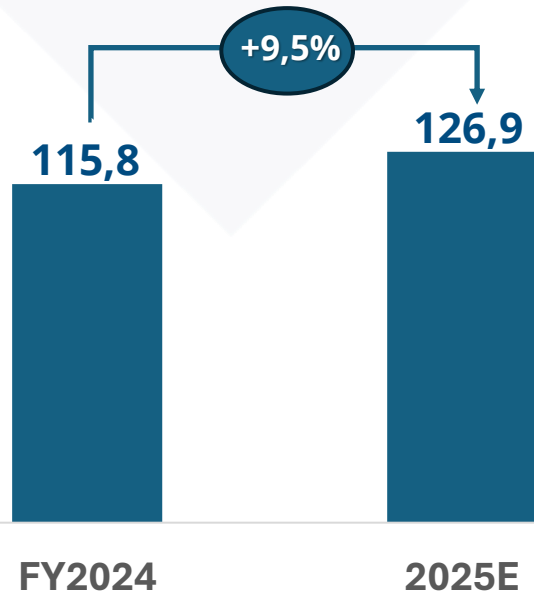
HIGHLIGHTS FY2024 and 2025E

- **Value of Production** at **115,8 €M** in 2024 (+3,3% vs 2023). In 2025 higher contribution expected from new acquisitions in AEPM, reaching a total amount of **126,9 €M** (+9,5% vs 2024).
- **EBITDA Adjusted** : flat in 2024 at **12,5 €M**. In 2025 expected growth at **14,3 €M** mainly driven by AEPM.
- **Net Debt**: Sharp drop expected in 2025 driven by higher operating results (-38,0% at **5,8 €M** from)

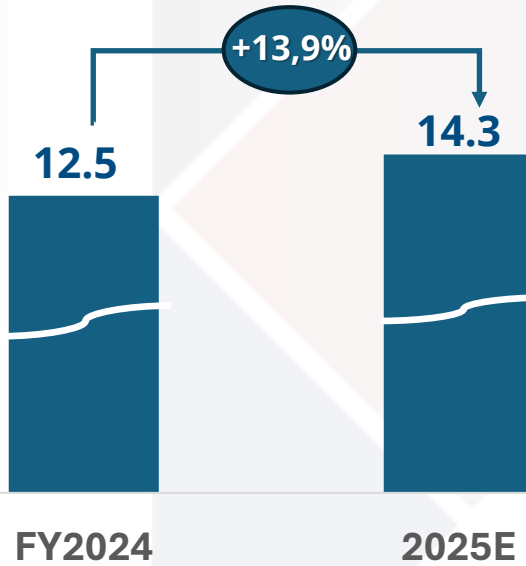
FINANCIAL HIGHLIGHTS FY2024 and 2025E

(€M)

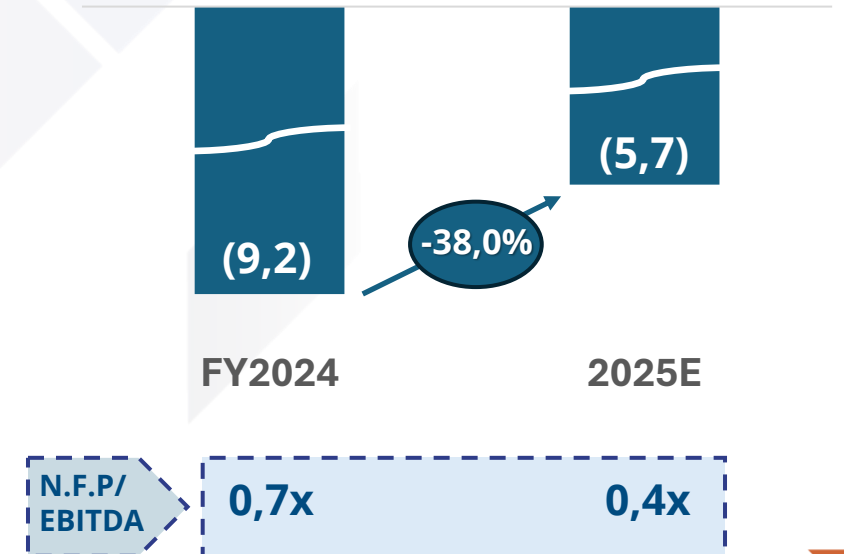
VALUE OF PRODUCTION



EBITDA ADJUSTED



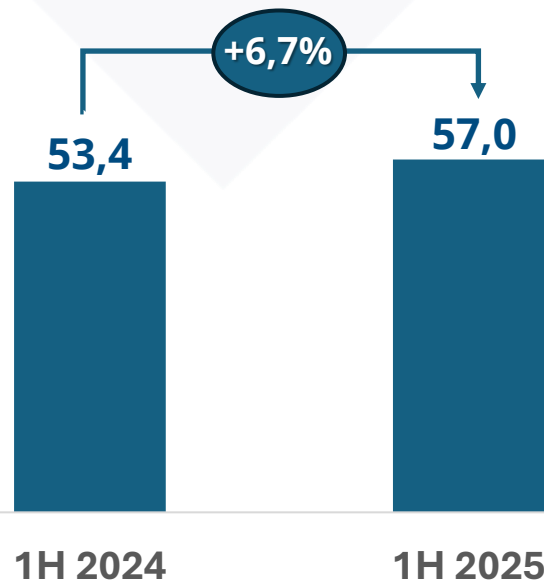
NET FINANCIAL POSITION



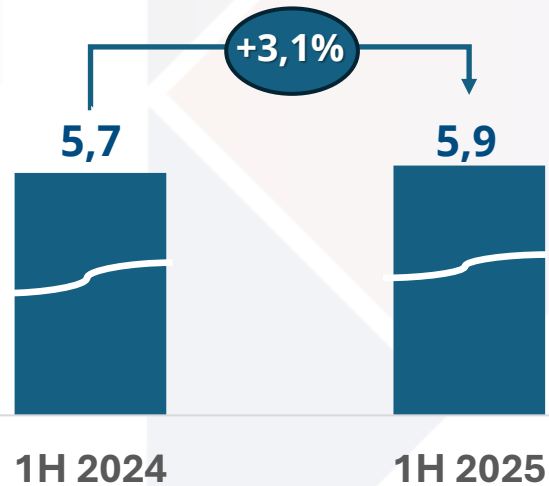
PROMISING RESULTS FROM 1H2025

(€M)

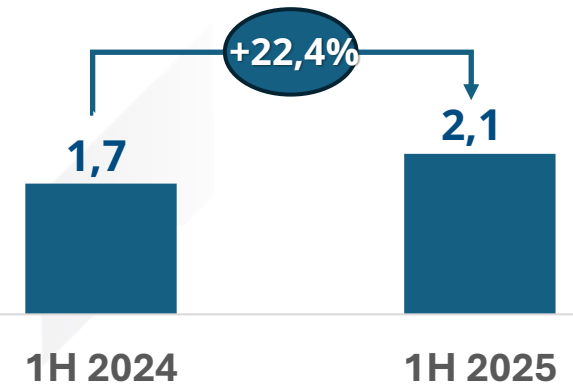
VALUE OF PRODUCTION



EBITDA ADJUSTED



NET RESULT

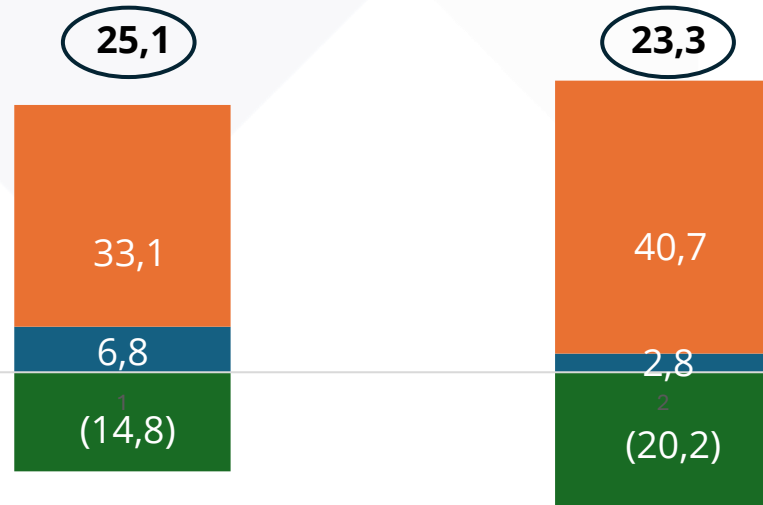


NET WORKING CAPITAL & CAPEX BREAKDOWN

NET WORKING CAPITAL

CAPEX

(€M)

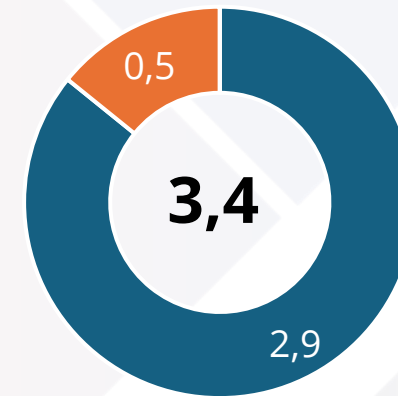


1H2025

FY2024

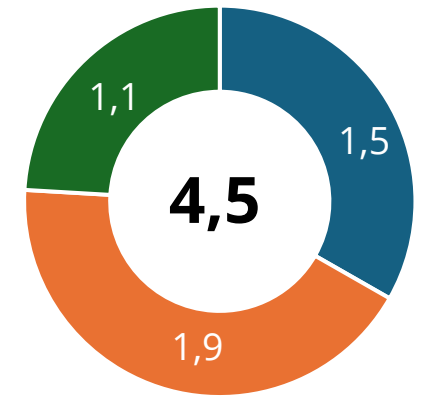
■ Inventories ■ Trade receivables ■ Trade payables

✓ Days Inventory Outstanding	12
✓ Days Sales Outstanding	121
✓ Days Payables Outstanding	54



■ M&A ■ Tangibles

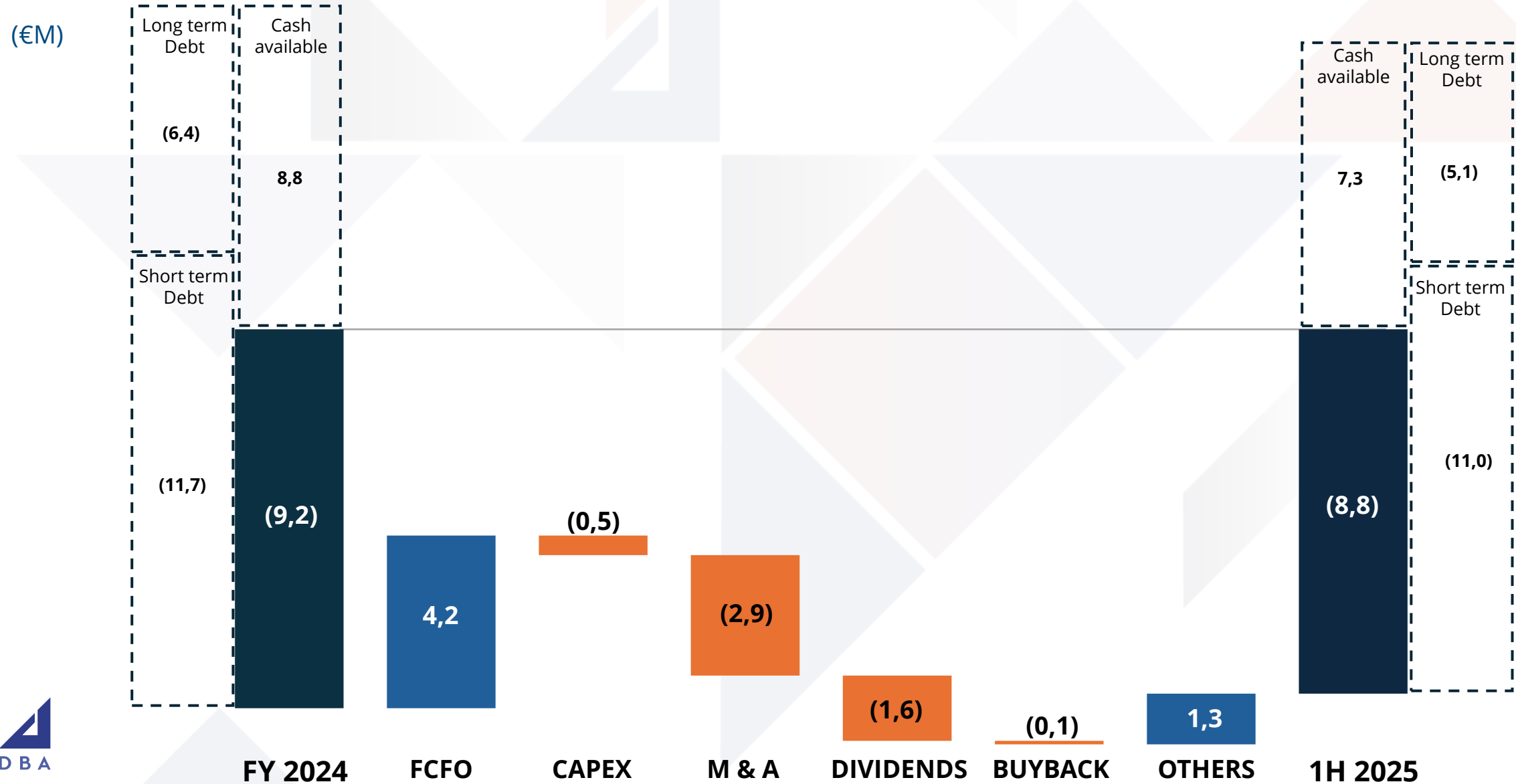
1H2025



■ M&A ■ Tangibles ■ Others

FY2024

NET FINANCIAL DEBT EVOLUTION



FINAL TAKEAWAYS

- Solid **reputation** and reliable **track record** in engineering services gained in more than 30 years
- **High retention rate** for DBA customers
- Growth strategy focused on most promising sectors like **MCI Data Centers, Energy Transition** and **Infrastructures**
- Agile business model with **low Capex intensity**
- **M&A strategy** focused **to strengthen** selectively the domestic market and **to progress** in the international expansion
- Financial discipline based on **Debt sustainability**

3. APPENDIX

FY 2024 FINANCIAL HIGHLIGHTS

(€M)	FY 2024	FY 2023	FY24 vs FY23
VALUE OF PRODUCTION	115,8	112,1	3,3%
Cost of Production	(102,4)	(98,0)	(4,5%)
<i>Other Costs</i>	<i>(1,5)</i>	<i>(2,1)</i>	30,4%
EBITDA reported	12,0	12,1	(0,8%)
<i>Non recurring costs</i>	<i>0,6</i>	<i>0,5</i>	
EBITDA ADJUSTED	12,5	12,6	(0,4%)
<i>% on Value of Production</i>	<i>10,8%</i>	<i>11,2%</i>	
Amortization, depreciation and impairment of assets	(5,2)	(4,1)	(24,9%)
EBIT	6,8	7,9	(14,3%)
Financial income and charges	(0,9)	(0,9)	1,0%
Adjustments to financial assets	(0,0)	-	
EARNINGS BEFORE TAXES	5,9	7,0	(16,0%)
Taxes	(2,5)	(2,7)	5,1%
NET EARNINGS	3,4	4,4	(22,7%)
Minorities	(0,3)	(0,3)	(5,7%)
GROUP NET EARNINGS	3,0	4,0	(24,9%)
(€M)	FY 2024	FY 2023	
NET INVESTED CAPITAL	31,4	34,4	
EQUITY	23,0	25,2	
NET FINANCIAL POSITION	(8,4)	(9,2)	

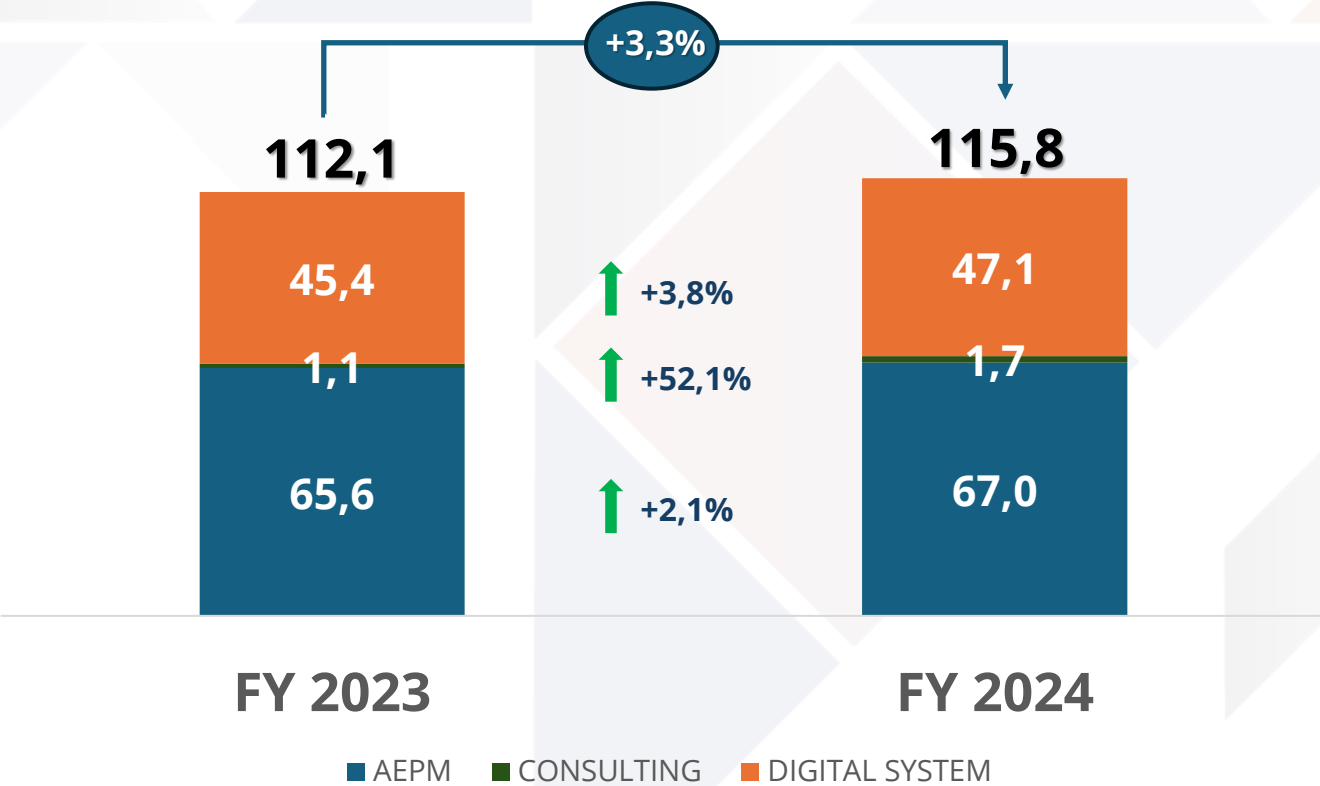
1H 2025 FINANCIAL HIGHLIGHTS

(€M)	1H 2025	1H 2024	1H25 vs 1H24
VALUE OF PRODUCTION	57,0	53,4	6,7%
Cost of Production	(51,3)	(47,4)	(8,2%)
<i>Other Costs</i>	0,2	(0,7)	n.a.
EBITDA reported	5,9	5,3	10,8%
<i>Non recurring costs</i>		0,4	
EBITDA ADJUSTED	5,9	5,7	3,1%
<i>% on Value of Production</i>	10,3%	10,7%	
Amortization, depreciation and impairment of assets	(2,1)	(2,2)	3,1%
EBIT	3,8	3,1	20,6%
Financial income and charges	(0,4)	(0,4)	18,4%
Adjustments to financial assets	(0,0)	(0,0)	
EARNINGS BEFORE TAXES	3,4	2,7	26,4%
Taxes	(1,3)	(0,9)	(33,8%)
NET EARNINGS	2,1	1,7	22,4%
Minorities	(0,3)	(0,2)	(35,0%)
GROUP NET EARNINGS	1,9	1,5	20,8%

(€M)	1H 2025	FY 2024
NET INVESTED CAPITAL	35,1	31,4
EQUITY	26,3	23,0
NET FINANCIAL POSITION	(8,8)	(8,4)

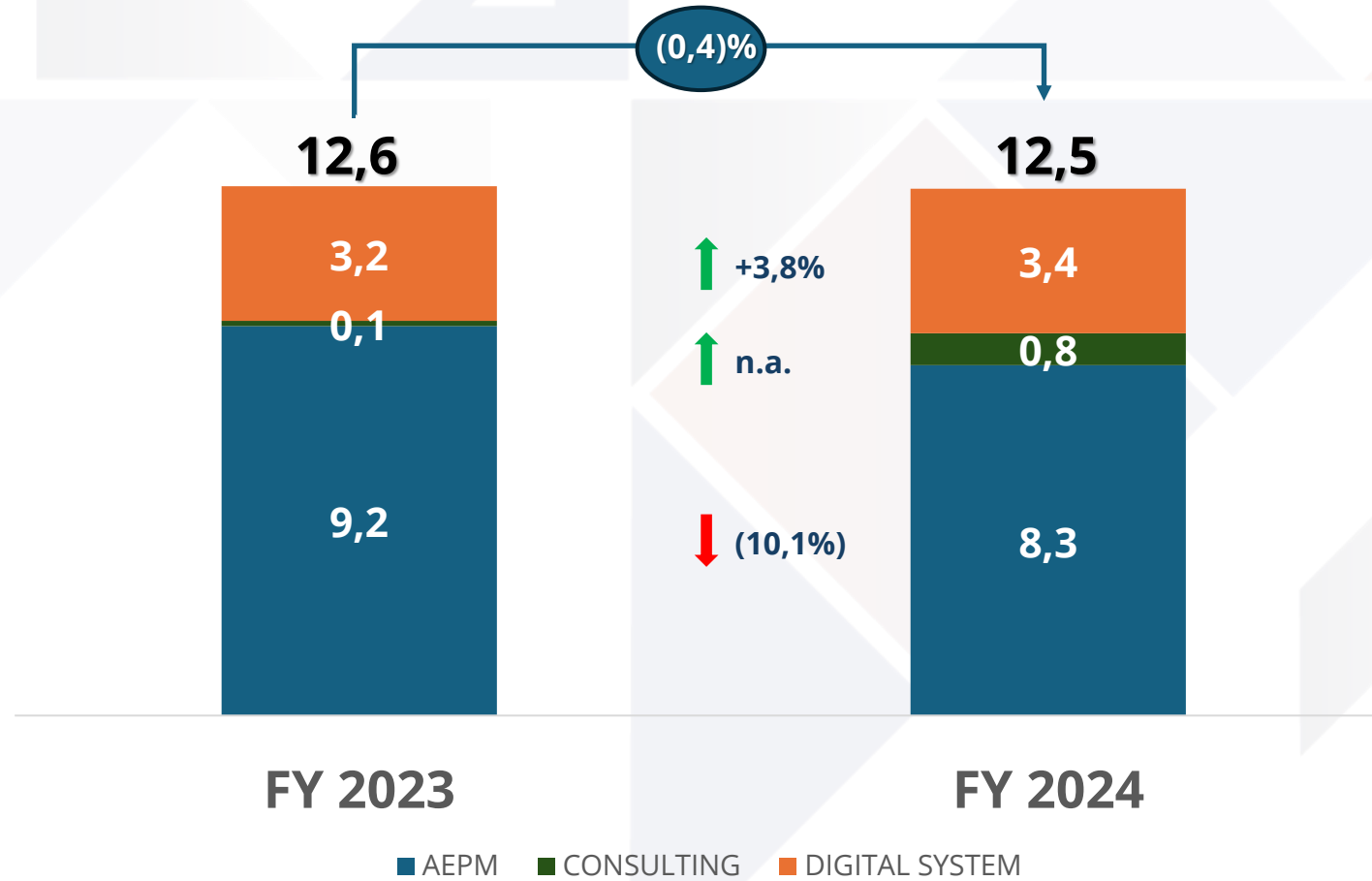
VALUE OF PRODUCTION BREAKDOWN: FY2023/2024

(€M)



EBITDA ADJUSTED BREAKDOWN: FY2023/2024

(€M)



Mission Critical Infrastructures Data Center

2003
ACTIVE SINCE

>900
DATA CENTER
& POPs

+160/18
EXPERTS IN THE DC
SECTOR/ CERTIFIED EXPERTS

>20
MAIN CLIENTS

>300.000
TOTAL SQM

>550
TOTAL MW IT POWER



DATA CENTER (IRIDEOS)

- Due Diligence and feasibility studies
- BIM integrated design for the preliminary, final and technical design stages
- Safety coordination
- Management of authorization processes
- Works Supervision, CSA and MEP plants on site specialists
- Testing Commissioning assistance
- Assistance to LEED, UPTIME TIER IV & ANSI/TIA 942 rating 4 certifications



PUBLIC INSTITUTIONS, UNIVERSITIES, P.A. (LEPIDA, VSIX, UNI PD, MOSE, INSIEL, ETRA, CONCESSIONI AUTOSTRADALI VENETE SPA, CAV, VENETO AND TUSCANY REGIONS)

- Laser scanner survey
- BIM integrated design for all design stages and disciplines (CSA+MEP)
- Safety coordination
- Management of the authorization process; document drafting, submission and permit
- Works Supervision, CSA and MEP plants on site specialists.



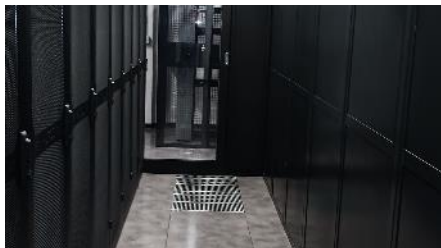
EXISTING POPs UPGRADE AND NEW POPs IMPLEMENTATION (VODAFONE, FASTWEB, OPEN FIBER, ITALTEL, WIND-TRE)

- Drafting of Project Standards
- Site search
- Integrated design for the preliminary, final and technical design stages
- Safety coordination
- Management of the authorization processes
- Document submission and permits
- Works Supervision, CSA and MEP plants on site specialists
- Testing & Commissioning
- Project Management



ASSESSMENT, DUE DILIGENCE, GAP ANALYSIS AND CONSULTANCY (IRIDEOS, ATOS, AUTOVIE VENETE, INSIEL, VENIS, GENESIS, REAM)

- Multidisciplinary technical assessment
- Gap analysis
- Due diligence towards Uptime Institute and ANSI/TIA-942 standards
- Technical consultancy
- Feasibility studies
- O&M SOP, MOP, EOP procedure drafting



MODULAR DATA CENTER/EDGE DATA CENTER (HUAWEI, RAIWAY)

- Drafting of Project Standards
- Laser Scanner survey
- BIM integrated design for all design stages and disciplines (CSA+MEP)
- Safety coordination
- Management of the authorization process
- Document submission and permits
- Project Management, Construction Management.
- O&M SOP, MOP, EOP procedure drafting



HYPERSCALE DATA CENTER (NOOVLE, CINECA, INTERNATIONAL CLIENTS)

- BIM integrated design for all design stages and disciplines (CSA+MEP)
- Safety coordination during the design and construction stages
- Management of the authorization process
- Implementation plan, document submission and permits.
- Works Supervision
- CSA and MEP plants on site specialists.
- Commissioning and testing
- Works Supervision on site

Telecommunication

1995
ACTIVE SINCE

10
COUNTRIES

>100.000
KM OF FIBER OPTIC
NETWORKS

>15
MAIN CLIENTS

>30.000
RADIO SITES

3 MN
REAL ESTATE UNITS
CONNECTED VIA FIBER OPTICS



OPEN FIBER - TIM/FIBERCOP - FASTWEB - VODAFONE - A2A - RETELIT/IRIDEOS - FIBRECONNECT - INSIEL

FTTx / FWA / B2B Fiber Optic Networks
Black, White, and Grey Areas – PNRR and Long-Distance Networks

- GIS Design and Permitting
- Site Survey and Analysis (Walk-In and Walk-Out), including digital tools
- Construction Management
- Health and Safety Coordination
- Quality and Safety Audit on Construction Sites



OPEN FIBER - VODAFONE - HUAWEI - ZTE - WINDTRE - FASTWEB

Central Offices, OLO Rooms, PoPs, and Network Nodes
Installation, Migration, and Decommissioning of TLC Equipment

- Project Management
- Technical/Specialist Surveys and HQSE (Health, Quality, Safety, Environment)
- Test and Commissioning Support
- Asset Management and Inventory



VODAFONE - TIM/FIBERCOP - WINDTRE - ILIAD - INWIT - CELLNEX - FASTWEB - EOLO - RAIWAY- INSIEL

Mobile Telecommunications Networks – BTS / DAS / FWA

- Site Acquisition, BIM Design, and Permitting
- Construction Management
- Health and Safety Coordination
- Quality and Safety Audits on Construction Sites



OPEN FIBER - VODAFONE - WINDTRE - FASTWEB - AGENAS - BAKTELECOM

Telecommunications Networks

- Multidisciplinary Technical Assessments
- Drafting and Review of Design Standards and Technical Implementation Specifications
- Design Support
- Energy Management



FASTWEB - OPEN FIBER - VODAFONE - TIM - WINDTRE - HUAWEI

CENTRALI, PoP E NODI DI RETE

- Site Acquisition, BIM Design, and Permitting
- Construction Management
- Health and Safety Coordination
- Quality and Safety Audits on Construction Sites



OPEN FIBER - VODAFONE - FASTWEB - RAIWAY - BT ITALIA - MEDIASET

RETI TLC

- Automated Management of Permit, Safety, and Construction Processes
- Digital Document Archiving
- Project Management Platforms
- Predictive Models with "What-If" Scenarios for Decision Support

Buildings Real Estate

1999
ACTIVE SINCE

>1,000 KEYS
(HOSPITALITY
SECTOR)

>1,5 MN
SQM INVOLVED
(REAL ESTATE)

> € 2,300 MN
INVOLVED
(REAL ESTATE)

>2,000
APARTMENTS
(RESIDENTIAL)

Approx. 1 MN SQM
INVOLVED (OFFICES)



RAI HEADQUARTERS, 14 VIALE MAZZINI, ROME

- Preliminary and Final Design Engineering
- Integrated Technical Design for Architecture, Structures, and Systems
- LEED Certification
- Safety Coordination during Design Phase
- Integrated Design in BIM



OFFICES ON CORSO EUROPA 18-20 IN MILAN

- Preliminary and Final Design Engineering
- Integrated Technical Design for Architecture, Structures, and Systems, Fire Prevention
- LEED and WELL Certification
- Safety Coordination during Design/Execution Phases
- Construction Management



HOTEL TOCQ - MILAN

- Preliminary, final and technical integrated design
- Design for permitting
- Definition of typical layout
- Health and safety coordination during design and execution phases
- Works supervision



HOTEL BUSCA THEDY - GRESSONEY (AO)

- Urban Planning (PRG and PUD amendment)
- Feasibility study, preliminary, final and technical design for architecture, structures, and systems, including fire prevention measures
- Health and safety coordination during the design phase



RESIDENCES ON VIA BALILLA IN MILAN

- Preliminary and Final Design Engineering
- Integrated Technical Design for Architecture, Structures, and Systems, Fire Prevention, LEED
- Integrated Design in BIM
- Construction Management



RESIDENCES ON VIA AMPERE IN MILAN

- Preliminary and Final Design Engineering
- Integrated Technical Design for Architecture, Structures, and Systems, Fire Prevention, LEED
- Integrated Design in BIM
- Construction Management

Buildings Retail

2003
ACTIVE SINCE

6,000
STORES/BRANCHES
INVOLVED

>30,000 JOBS
IN 100+
BUILDINGS

>800
INTERESTED
MUNICIPALITIES IN ITALY

15
MAIN CLIENTS

>1.5 MILLION SQM
INVOLVED
(RETAIL)

>5 MILLION SQM
INVOLVED
(REAL ESTATE)

INTERVENTIONS IN
ALL REGIONS OF ITALY



POSTE ITALIANE, BNL, N.D. BANK, ALLIANZ, GENERALI, ENEL, TIM, ENI, FERSERVIZI, BPM, SNAM

- Engineering and Consultancy Services for New Construction/Fitout of Office Buildings
- BIM Design
- Due Diligence and Workspace Planning



N.D. BANK, ALLIANZ

- Design and Construction Management of Office and Hotel Buildings



BNL, N.D. BANK, MPS, COIN, VODAFONE, AUTOGRILL, UNICREDIT, FASTWEB

- Engineering and Consultancy Services for the New Construction / Renovation of Retail Networks, Bank Branches, Restaurants, and Clothing Stores
- BIM Design



MPS

- Design and Construction Supervision for the Renovation/Decommissioning of Over 500 Branches Nationwide in Italy



BNL, ENEL, PAM, POLIMI, ARVAL, FINDOMESTIC, MPS

- Technical Due Diligence in Over 1,200 Buildings



TIM, MPS

- Software Solutions for the Digitalization of Asset, Project, and Safety Management Processes:
- DBA Project+, POSIC

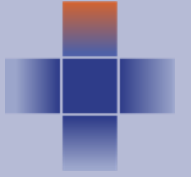
Buildings Pharma

1970
ACTIVE SINCE

>290.000
SQM ADDRESSED

>25
MAIN CLIENTS

>500.000
SQM ADDRESSED



EDIFICIO 23 – TOSCANA LIFE SCIENCES

- Feasibility study
- Integrated preliminary, final and technical design for architecture structures and installations
- Management of authorisation processes
- BIM integrated design



FARMACEUTICI FORMENTI S.p.A. – ORIGGIO (VA) MASTERPLAN 2025 AND NASAL SPRAY DIVISION

- Master Plan
- Integrated Preliminary, Final, and Technical Design for Architecture, Structures, and Systems.
- Project Management
- Safety Coordination and Work Supervisor
- General and Specialist Construction Management
- Integrated Design in BIM



NEW MOLECULAR GENETICS LABORATORY (Innovector S.r.l. and Next Generation Diagnostics S.r.l.)

- Feasibility study
- Integrated preliminary, final and technical design for architecture structures and installations
- Works Supervision
- BIM integrated design



RE-FUNCTIONALIZATION AND EXPANSION - CHIESI FARMACEUTICI S.P.A. - (Parma)

- Preliminary, Final and Technical design for Architecture, structure, Mechanical plants and CDZ
- Electrical plants, Special plants
- Works Supervision
- Safety Coordination
- BIM design



DEFENSE INDUSTRIES AGENCY – PHARMACEUTICAL CULTIVATION AND LABORATORY DIVISION

- Final and Technical Integrated Design for Architecture, Structures, and Systems.
- Integrated Design in BIM.
- Operational Construction Management.
- Safety Coordination during the Design Phase.



FACTORY REVAMPING - GMP UP (BAYER HEALTHCARE MANUFACTURING SRL)

- Integrated Preliminary, Final, and Technical Design for Architecture, Structures, and Systems.
- Management of Authorization Procedures
- Integrated Design in
- BIM
- Construction Management
- Coordination and Integration of Process Systems
- Safety Coordination during Design and Execution Phases

Buildings Healthcare

1970
ACTIVE SINCE

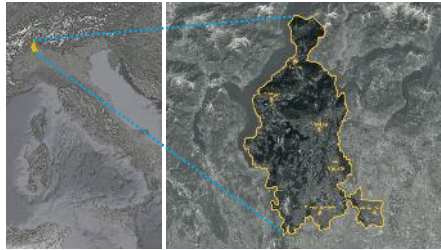
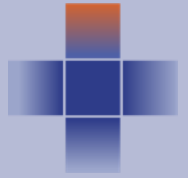
~300 MN
SQM ADDRESSED

> 100
OPERATING ROOMS

>15
MAIN CLIENTS

>940 MN
€ INVOLVED

>3 MN
BEDS



INVITALIA – AQ BOX Covid-19 – Hospitals Saronno, Busto Arsizio, Gallarate, Tradate, Varese, Luino, Cittiglio

- Feasibility study
- Preliminary, final, and technical integrated design for architecture, structures, and systems.
- Management of the authorization process
- Integrated design in BIM"



GENERAL REQUALIFICATION OF THE HUMANITAS – GRADENIGO HOSPITAL COMPLEX

- Master Plan
- Preliminary, final, and technical integrated design for architecture, structures, and systems.
- Project Management
- Safety coordination and works supervisor
- General and specialist project management
- Integrated design in BIM



CDI – Centro Diagnostico Italiano, locations in Milan Viale Liguria, Via Temolo, Porta Romana, Piazzetta Giordano

- Feasibility study
- Preliminary, final, and executive integrated design for architecture, structures, and systems.
- Project management
- Integrated design in BIM



UNIVERSITY MEDICAL CENTER AND COMMUNITY HEALTH CENTER OF LJUBLJANA, HEALTH INSURANCE INSTITUTE OF SLOVENIA

- IT Service Management (PRO.Cloud)
- IT Support Services
- Private Cloud Services
- Cybersecurity
- Backup as a Service
- IBM zSeries Servers (mainframe) with implementation and maintenance services



PROTON CENTER and OPERATING ROOM BLOCK IE03 (IEO EUROPEAN INSTITUTE OF ONCOLOGY)

- Feasibility Study
- Preliminary, final, and technical integrated design for architecture, structures, and systems.
- Management of the authorization process
- Integrated design in BIM
- Project management and safety coordination during design and execution phases.



NEW HEALTHCARE CAMPUS IE04 (IEO EUROPEAN INSTITUTE OF ONCOLOGY)

- Preliminary, final, and technical integrated design for architecture, structures, and systems.
- Management of the authorization process
- Integrated design in BIM
- Coordination and integration of process systems
- Safety coordination during the design phase

Buildings Industrial

1970
ACTIVE SINCE

>500 MN
SQM ADDRESSED

>20
MAIN CLIENTS

>350 MN
€ INVOLVED



STELLANTIS LOGISTIC PARK - WAREHOUSE PIEDIMONTE SAN GERMANO S.p.A.

- Preliminary, final, and technical integrated design for architecture, structures, and systems.
- Project Management
- BIM
- Coordination and integration of process systems



FRECCIA INTERNATIONAL - NEW PRODUCTION FACILITY AND LOGISTICS HUB

- Preliminary, final, and technical integrated design for architecture, structures, and systems.
- Integrated design in BIM
- Coordination and integration of process systems
- Safety during the design/execution phase
- Project Management



LTC TECHNOELECTRIC COMPANY S.p.A. LEGNANO (MI) - New Production Facilities

- Preliminary, final, and technical integrated design for architecture, structures, and systems.
- Integrated design in BIM
- Coordination and integration of process systems
- Safety during the design/execution phase
- Project Management



SICAD S.P.A. - EXPANSION AND REQUALIFICATION OF THE INDUSTRIAL PARK IN UBOLDO (MI)

- Preliminary, final, and technical integrated design for architecture, structures, and systems.
- Integrated design in BIM
- Coordination and integration of process systems
- Project Management



A2A S.P.A. | UNARETI S.P.A. - NORD RECEIVER AND LOGISTICS-MAINTENANCE BUILDINGS IN MILAN

- Preliminary, final, and technical integrated design for architecture, structures, and systems.
- Integrated design in BIM
- Coordination and integration of process systems
- Safety during the design/execution phase
- Project Management



NESTLÉ WATERS - REQUALIFICATION OF THE CEPINA (SO) PLANT

- Preliminary, final, and technical integrated design for architecture, structures, and systems.
- Coordination and integration of process systems
- Safety during the design/execution phase
- Project Management

Transport & Logistics

Roads, Airports, Ports, Dryports

1995
ACTIVE SINCE

10
COUNTRIES

>2.500
KM OF
HIGHWAYS

>400 MN OF TONS OF
GOODS HANDLED YEARLY
IN THE PORTS WE SERVE

>25
MAIN CLIENTS

>200
TUNNEL
DESIGNED

>15
PORTS SERVED BY
OUR SOFTWARE



ANAS, SPEA, AUTOSTRADA, AVTODOR, GAVIO, DORSERVIS

- ITALY – GEORGIA - MONTENEGRO
- Engineering and Consultancy Services for Plants along Roads and Tunnels
 - BIM, Risk analysis, ventilation algorithms
 - ITS, Tolling Systems (ETS)



ADSP IONIAN SEA - MULTI-PURPOSE PIER OF TARANTO

- ITALY
- Cold Ironing Feasibility Study
 - Final design for berth expansion
 - Construction supervision and technical testing



PORTS

- ITALY – KSA - ALBANIA – VENEZUELA - AZERBAIJAN
- Concept and Feasibility studies
 - Engineering and Consultancy Services on Seand Land side



SEA

- ITALY
- Software solution to manage Health & Safety during construction of Airport Terminal Milano Malpensa



ADR, SEA, ENAC

- ITALY
- Engineering and Consultancy services for Air and Land side plants
 - Energy Efficiency Audits



PORTS

- ITALY – BALKANS – MALTA - BULGARIA – GEORGIA – AZERBAIJAN
- Customised Software solutions for Port Authorities and Terminal Operators
 - Smart Ports and gate automation

Energy

Energy transmission/transformation

2007
ACTIVE SINCE

>40
SUBSTATIONS

>2.000 Km OF POWER LINES
DESIGNED OR SUPERVISED
IN >100 PROJECTS

10
ENERGETIC
STORAGES

>150
RECHARGING
POINTS IN ITALY



TERNA

ITALY

- Consulting and engineering services for high voltage (HV) overhead power lines
- Consulting and engineering services for high voltage (HV) electrical substations
- Renewable energy storage projects (SANC)



MINISTRY OF INFRASTRUCTURE - PORT SYSTEM AUTHORITY (ADSP)

ITALY

- Design of Cold Ironing systems for shore-side electrical power supply to docked ships
- Design of high voltage (HV) connections to the National Transmission Grid (RTN) for ports, including related user substations



CESI, PRYSMIAN, TERNA CG, ABB

ITALY - FRANCE - MONTENEGRO

- Engineering and consulting services for HV transformer stations and underground cables
- HVDC substations



CESI, Ministries of Energy, OSHEE

ALBANIA - KIRGHIZISTAN

- Construction Management and works Supervision for Power Substations



e-DISTRIBUZIONE, ENEL

ITALY

- Consulting and engineering services for Primary Substations, Secondary Substations, and Star Centers (AQ Lombardy, Emilia-Romagna, Sardinia, and Campania)



TERNA

ITALY - MONTENEGRO

- Software solution to manage Health & Safety during construction of 400KV Submarine Power Cable and HVDC Substation

Energy

Sustainable mobility

2003
ACTIVE SINCE

>6.000
GAS STATION
ADDRESSED

7
COUNTRIES

5
MAIN CLIENTS

75
GAS STATIONS
NEWLY DESIGNED

>250
GAS STATIONS SERVED
BY OUR SOFTWARE



ENI, API, IP, TOTAL, ERG, Q8

ITALY – ANGOLA

- Engineering and Consultancy Services for realisation/renewal/rebranding of Filling Stations Networks
- BIM design



ENI

ITALY

- Engineering services for the implementation of the pilot project for the testing of hydrogen mobility



SNAM4MOBILITY, ENI

ITALY

- Engineering and Consultancy Services for new realisation of LPG/LNG/CNG Refuelling Stations Network



ENI, TOTALERG

ITALY

- Project management for the implementation/renewal/rebranding of gas station networks



ENEL X, ENI SPA, BE CHARGE, E.ON, DUFERCO ENERGIA

ITALY

- Engineering and consulting services for the implementation of charging infrastructure for electric vehicles



MOL, OMV, CRODUX, LOGO

SLOVENIA – CROAZIA - BOSNIA & HERZEGOVINA
– SERBIA - ITALY

- Software application to manage sales processes in Filling stations and from Headquarters

Energy

Energy Efficiency

2010
ACTIVE SINCE

>20
MAIN CLIENTS

2
COUNTRIES

>500
ENERGY AUDITED
BUILDINGS



WINDTRE, VODAFONE, FASTWEB, BT, INSIEL, TIM

ITALY

- Energy Efficiency services for Data Center, Telecommunication Central Offices and PoP



ENAC

ITALY

- Energy Efficiency audits for 15 Airports



BENETTON, GENERALI, POSTE, RFI, FINIVEST, ENEL, UPI, COMUNE GENOVA

ITALY

- Energy Efficiency services for Buildings



BENETTON, ENI, BNL

ITALY

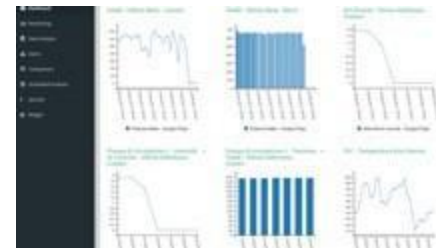
- Energy Efficiency services for Retail networks



MEDIASET, EITOWERS

ITALY

- Energy Efficiency services for Offices and Television Studios



ENI

ITALY

- Monitoring and Prediction of Energy Consumptions through Tailor-made Software

2005
ACTIVE SINCE

40
N. WORKS

50.000 Mn
TOTAL VALUE
OF WORKS

4
N. WATER
TREATMENT PLANTS



BIM, IREN ACQUA

ITALY

- Design and Safety management for adjustment and restructuring of purification plants



ACQUEVENETE

ITALY

- Supervision of works for safety for springs interception for aqueducts in the area of Cadore Comelico



BIM, IREN ACQUA

ITALY

- Design and Safety Management for water networks and large supply systems



BIM, IREN ACQUA, OTHER CLIENTS

ITALY

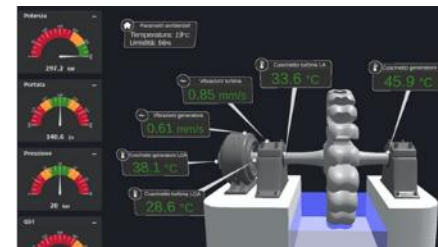
- Supervision of works of waste water collection works, upgrading and restructuring of sewage treatment plants, water supply networks and major supply lines



COMMISSARIO DELEGATO VAIA, BETA STUDIO, REGIONAL FORESTRY SERVICES, CIVIL ENGINEERING, MUNICIPALITIES PROVINCE OF BELLUNO

ITALY

- Design and Safety Management for hydraulic and structural works against hydrogeological instability



DIGITAL TWIN FOR HYDROELECTRIC TURBINES

ITALY

- Data collection and historicization from field devices also from different external sources/applications (sensors, PLC, SCADA, BMS,...)
- Functional logic implementation and predictive models
- 3D dashboard and advanced imaging tools

Software Products

1998
ACTIVE SINCE

>250
GAS STATIONS
SERVED

>200
SAFETY AND CONSTRUCTION
PROJECTS MANAGED

>15
PORTS SERVED

>50
IT NETWORKS
RISK-ASSESSED



SINFONIST



- Solutions for Asset and Project Management applied to FTtx and Mobile Networks projects
- Security Management Solution



PORT-LINE



- Port Management System
- TOS - Terminal Operating System | General Cargo | RoRo Car RoRo- RoPax
 - PCS - Port Community System
 - WFM - Work Force Management System

- WMS - Warehouse Management System
- MSW - maritime Single Window
- VBS - Vehicle Booking System
- RSS - Rail Shunting System
- BLL - Billing
- POCC - Port Operations Control Centre



DIGITAL TWIN

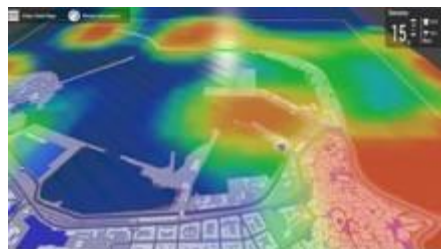
- Monitor plant and infrastructure status in real time
- Manage infrastructure maintenance
- Simulate operating scenarios (what-if)
- Conduct virtual inspections (walk-through)



GL+



- Retail Oil Business Management
- POS - Point of Sale
 - HOS - Head Office System
 - OPT - Outdoor Payment Terminal



GREEN+



- **DBA GREEN+** | Environmental Monitoring and Prediction Platform
- **DBA POWERGY+** | Energy Management Solution: monitoring, optimisation and consumption prediction through proprietary Big Data and IoT platform

IT Infrastructures Services & Solutions

1989
ACTIVE SINCE

>100
ENTERPRISE
PROJECTS

>50.000
SATISFIED
END-USERS

24/7/365
SECURITY OPERATIONS
CENTER

>100
HIGH-LEVEL
CERTIFICATES

170.000
SERVICES
REQUESTS



IT Services

- Managed Services
- ICT outsourcing
- Cloud Services
- Fix & Repair
- ICT Maintenance
- Network services
- 24/7 Service Desk



SAP Solutions

- SAP S/4 HANA
- SAP Cloud for Sales (C4S)
- SAP Analytic Cloud (SAC)
- SAP Success Factors
- SAP Detail Scheduling (PP/DS)



Consulting & Information Security

- Business Process
- Management Information security and compliance
- GDPR
- Penetration tests
- Business continuity
- Service Management
- Data Governance
- ICT revision
- Project Management
- Training & certification
- DPOaaS, CISOaaS



Digital Twin

- Data historicization and collection from in field devices also from third parties sources/applications (sensors, PLC, SCADA, BMS)
- Functional logics implementation
- Predictive models implementation
- Advanced 3D Dashboard and data visualisation tools





D B A

Thank You!